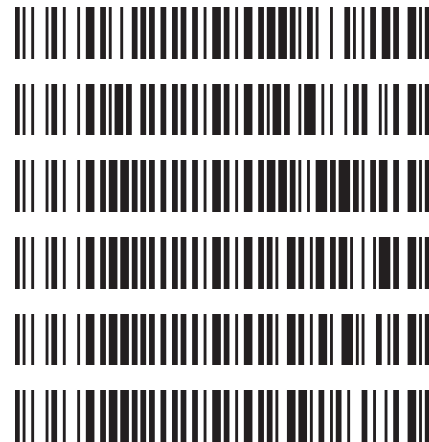


Worklist: 3577

<u>LAB_CASE</u>	<u>ITEM</u>	<u>TASK_ID</u>	<u>DESCRIPTION</u>
C2019-1218	1	158561	AM 3 Urine Carboxy-THC
M2019-0890	3	158564	AM 3 Urine Carboxy-THC
P2019-2092	1	158567	AM 3 Urine Carboxy-THC
P2019-2187	1	158570	AM 3 Urine Carboxy-THC
P2019-2197	1	158571	AM 3 Urine Carboxy-THC
P2019-2239	1	158573	AM 3 Urine Carboxy-THC



Data Path : G:\TOX\Pocatello\MMS\CDS\2019\am 3 worklist 3577\
Data File : THC-PC1.D
Acq On : 26 Jul 2019 15:00
Operator : ISP\Datastor
Sample : Spiked Positive c-THC Control
Misc : c-THC lot # 0497429 in Negative Lot # POC031319; Worklist 3577
ALS Vial : 32 Sample Multiplier: 1

Integration Parameters: events.e
Integrator: ChemStation

Method : C:\gcms\1\methods\TOX.M
Title :

Signal : EIC Ion 371.00 (370.70 to 371.70): THC-PC1.D\data.ms

peak #	R.T. min	first scan	max scan	last scan	PK TY	peak height	corr. area	corr. % max.	% of total
1	5.380	86	103	110	BV	1031	12494	5.79%	5.475%
2	6.203	372	389	430	VB	12527	215697	100.00%	94.525%

Sum of corrected areas: 228191
Signal : EIC Ion 473.00 (472.70 to 473.70): THC-PC1.D\data.ms

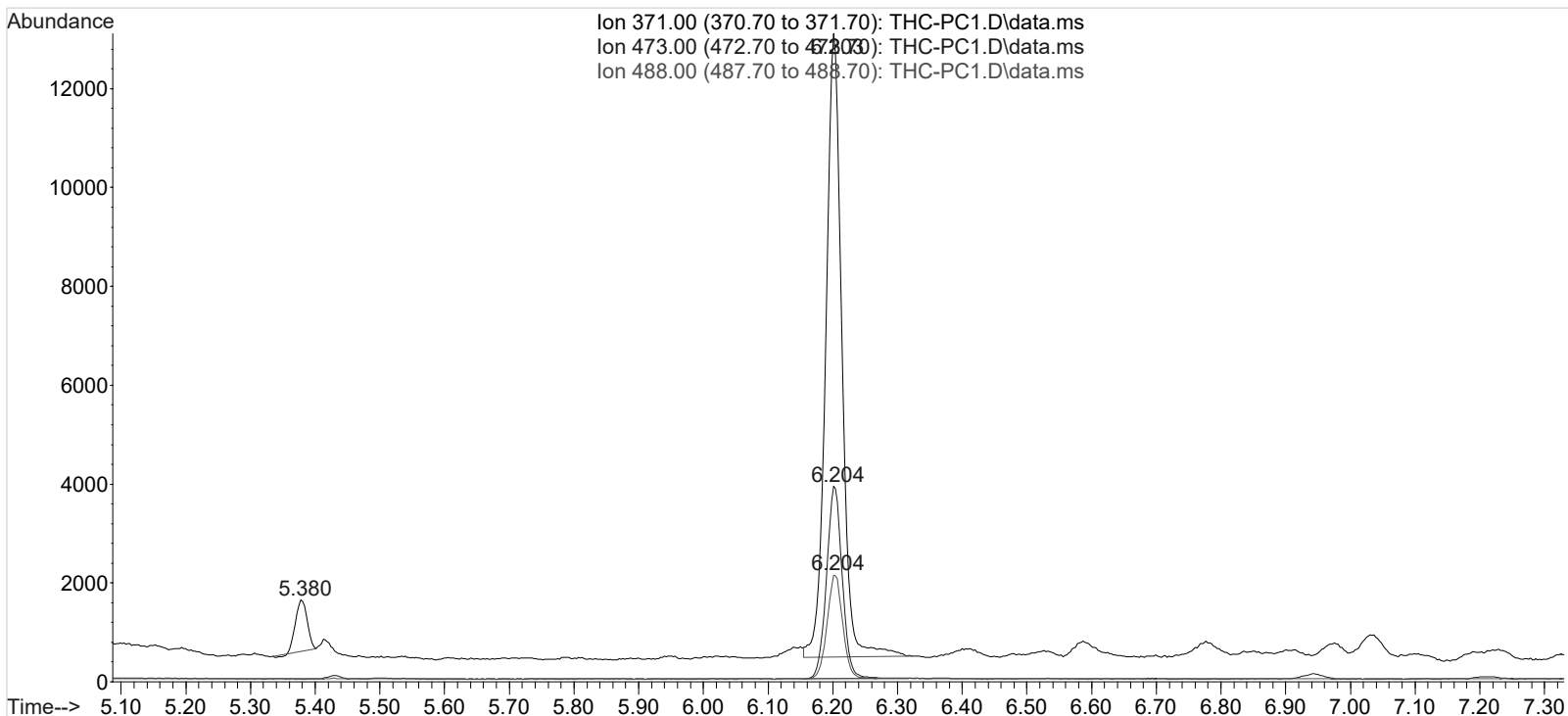
peak #	R.T. min	first scan	max scan	last scan	PK TY	peak height	corr. area	corr. % max.	% of total
1	6.204	373	389	413	BB	3881	64357	100.00%	100.000%

Sum of corrected areas: 64357
Signal : EIC Ion 488.00 (487.70 to 488.70): THC-PC1.D\data.ms

peak #	R.T. min	first scan	max scan	last scan	PK TY	peak height	corr. area	corr. % max.	% of total
1	6.204	374	389	411	BB	2107	34772	100.00%	100.000%

Sum of corrected areas: 34772

TOX.M Mon Jul 29 07:41:34 2019



9

Area Percent Report

Data Path : G:\TOX\Pocatello\MMS\CDS\2019\am 3 worklist 3577\
 Data File : THC-PC2.D
 Acq On : 26 Jul 2019 18:49
 Operator : ISP\Datastor
 Sample : Spiked Positive c-THC Control
 Misc : c-THC lot # 0497429 in Negative Lot # POC031319; Worklist 3577
 ALS Vial : 32 Sample Multiplier: 1

Integration Parameters: events.e
 Integrator: ChemStation

Method : C:\gcms\1\methods\TOX.M
 Title :

Signal : EIC Ion 371.00 (370.70 to 371.70): THC-PC2.D\data.ms

peak #	R.T. min	first scan	max scan	last scan	PK TY	peak height	corr. area	corr. % max.	% of total
1	5.382	88	104	112	BV	1608	20135	5.61%	5.178%
2	6.205	350	389	440	BV 2	20048	358860	100.00%	92.288%
3	7.036	666	678	692	VV	476	9855	2.75%	2.534%

Sum of corrected areas: 388850
 Signal : EIC Ion 473.00 (472.70 to 473.70): THC-PC2.D\data.ms

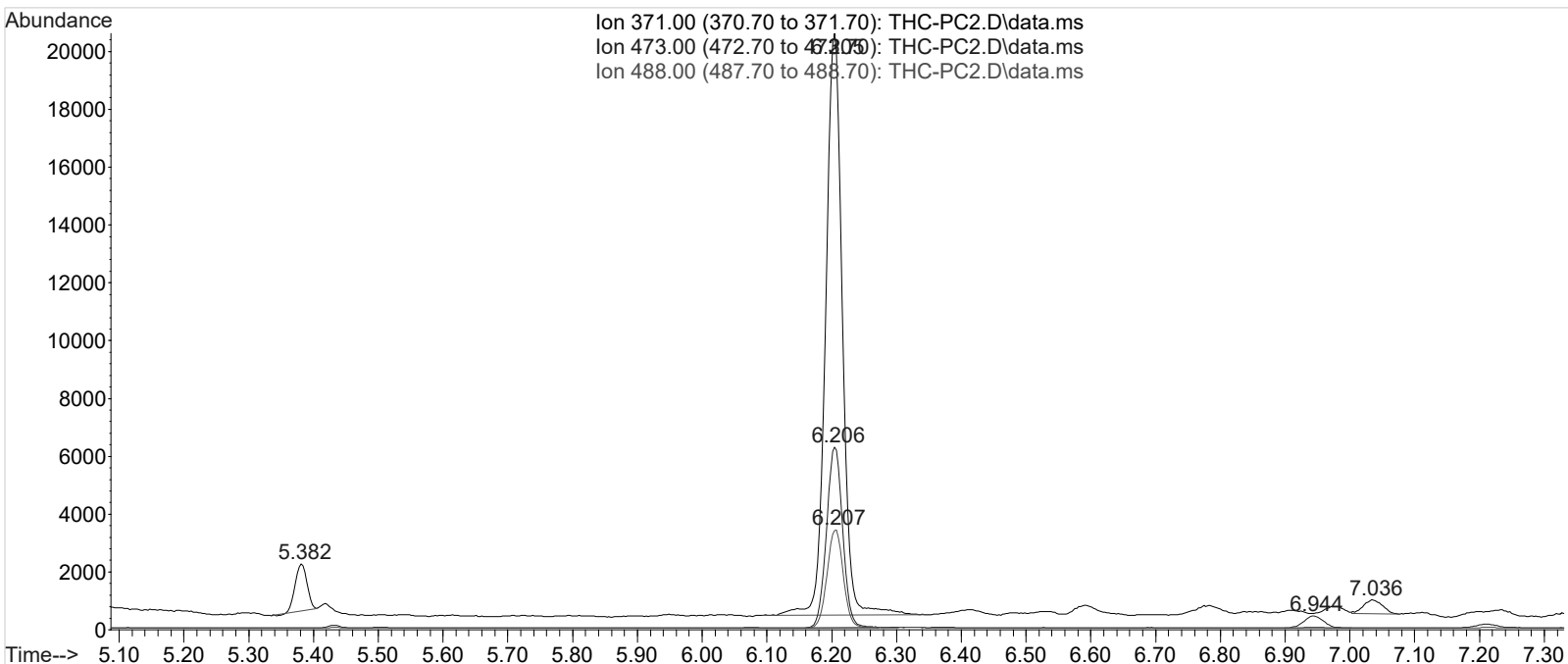
peak #	R.T. min	first scan	max scan	last scan	PK TY	peak height	corr. area	corr. % max.	% of total
1	6.206	374	389	419	BB 2	6221	107433	100.00%	92.575%
2	6.944	630	646	666	BB 2	413	8616	8.02%	7.425%

Sum of corrected areas: 116049
 Signal : EIC Ion 488.00 (487.70 to 488.70): THC-PC2.D\data.ms

peak #	R.T. min	first scan	max scan	last scan	PK TY	peak height	corr. area	corr. % max.	% of total
1	6.207	374	390	413	BB 2	3396	58432	100.00%	100.000%

Sum of corrected areas: 58432

TOX.M Mon Jul 29 07:42:04 2019



Data Path : G:\TOX\Pocatello\MMS\CDS\2019\am 3 worklist 3577\
Data File : THC-NC.D
Acq On : 26 Jul 2019 14:49
Operator : ISP\Datastor
Sample : Negative Control
Misc : Lot # POC031319; AM #3 Worklist 3577
ALS Vial : 31 Sample Multiplier: 1

Integration Parameters: events.e
Integrator: ChemStation

Method : C:\gcms\1\methods\TOX.M
Title :

Signal : EIC Ion 371.00 (370.70 to 371.70): THC-NC.D\data.ms

peak #	R.T. min	first scan	max scan	last scan	PK TY	peak height	corr. area	corr. % max.	% of total
1	5.382	88	104	111	BV	706	8186	100.00%	100.000%

Sum of corrected areas: 8186

Signal : EIC Ion 473.00 (472.70 to 473.70): THC-NC.D\data.ms

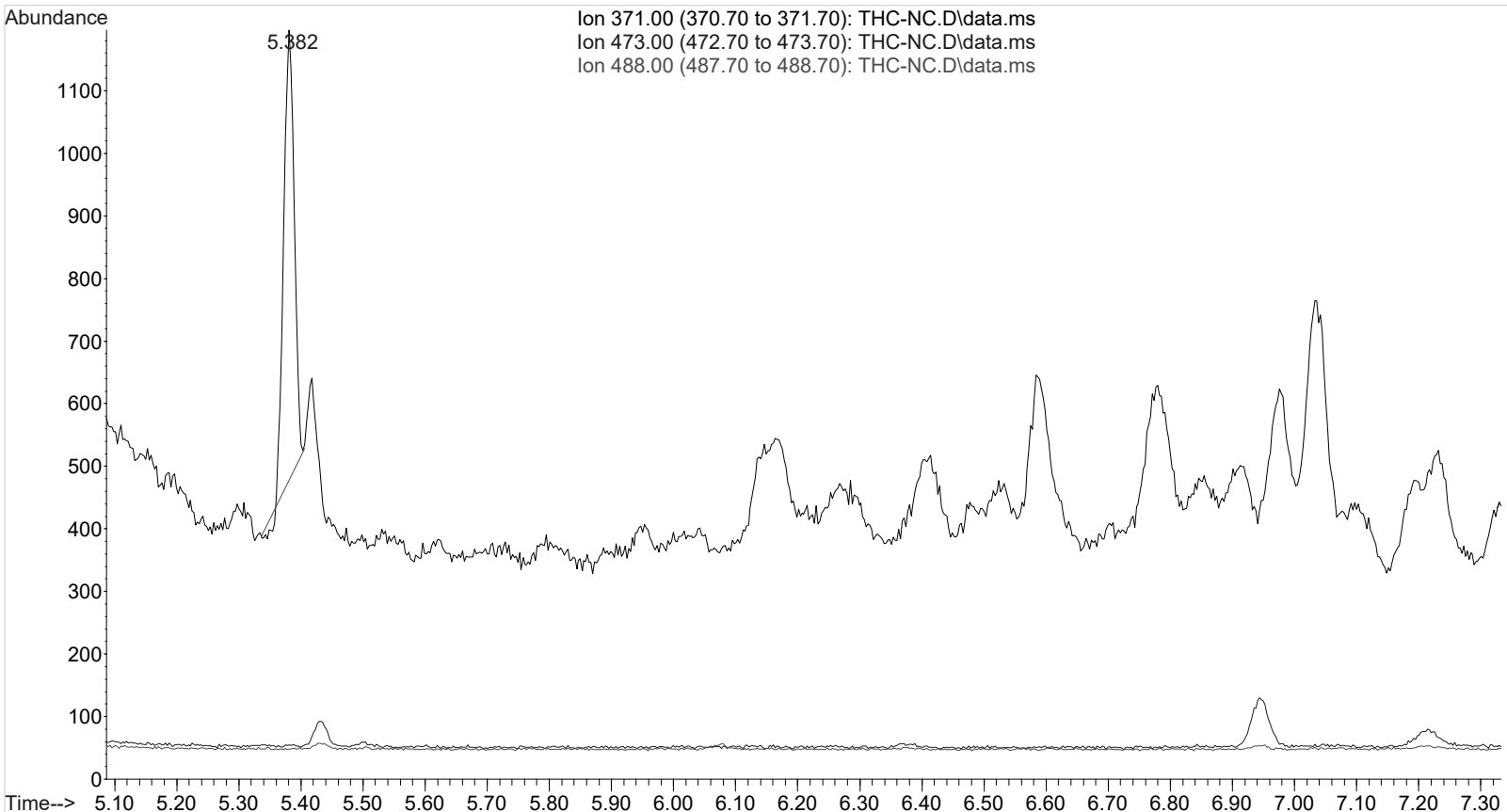
peak #	R.T. min	first scan	max scan	last scan	PK TY	peak height	corr. area	corr. % max.	% of total
No peaks were detected using the method integration parameters!									

No peaks were detected using the method integration parameters!
Signal : EIC Ion 488.00 (487.70 to 488.70): THC-NC.D\data.ms

peak #	R.T. min	first scan	max scan	last scan	PK TY	peak height	corr. area	corr. % max.	% of total
No peaks were detected using the method integration parameters!									

No peaks were detected using the method integration parameters!

TOX.M Mon Jul 29 07:42:37 2019



Data Path : G:\TOX\Pocatello\MMS\CDS\2019\am 3 worklist 3577\
Data File : THC-C3.D
Acq On : 26 Jul 2019 15:21
Operator : ISP\Datastor
Sample : Biorad C3 Control
Misc : C3 Lot # 68460; Worklist 3577
ALS Vial : 33 Sample Multiplier: 1

Integration Parameters: events.e
Integrator: ChemStation

Method : C:\gcms\1\methods\TOX.M
Title :

Signal : EIC Ion 371.00 (370.70 to 371.70): THC-C3.D\data.ms

peak #	R.T. min	first scan	max scan	last scan	PK TY	peak height	corr. area	corr. % max.	% of total
1	5.379	84	103	110	BV	838	9892	13.99%	12.274%
2	6.200	348	388	428	PB	3585	70705	100.00%	87.726%

Sum of corrected areas: 80598
Signal : EIC Ion 473.00 (472.70 to 473.70): THC-C3.D\data.ms

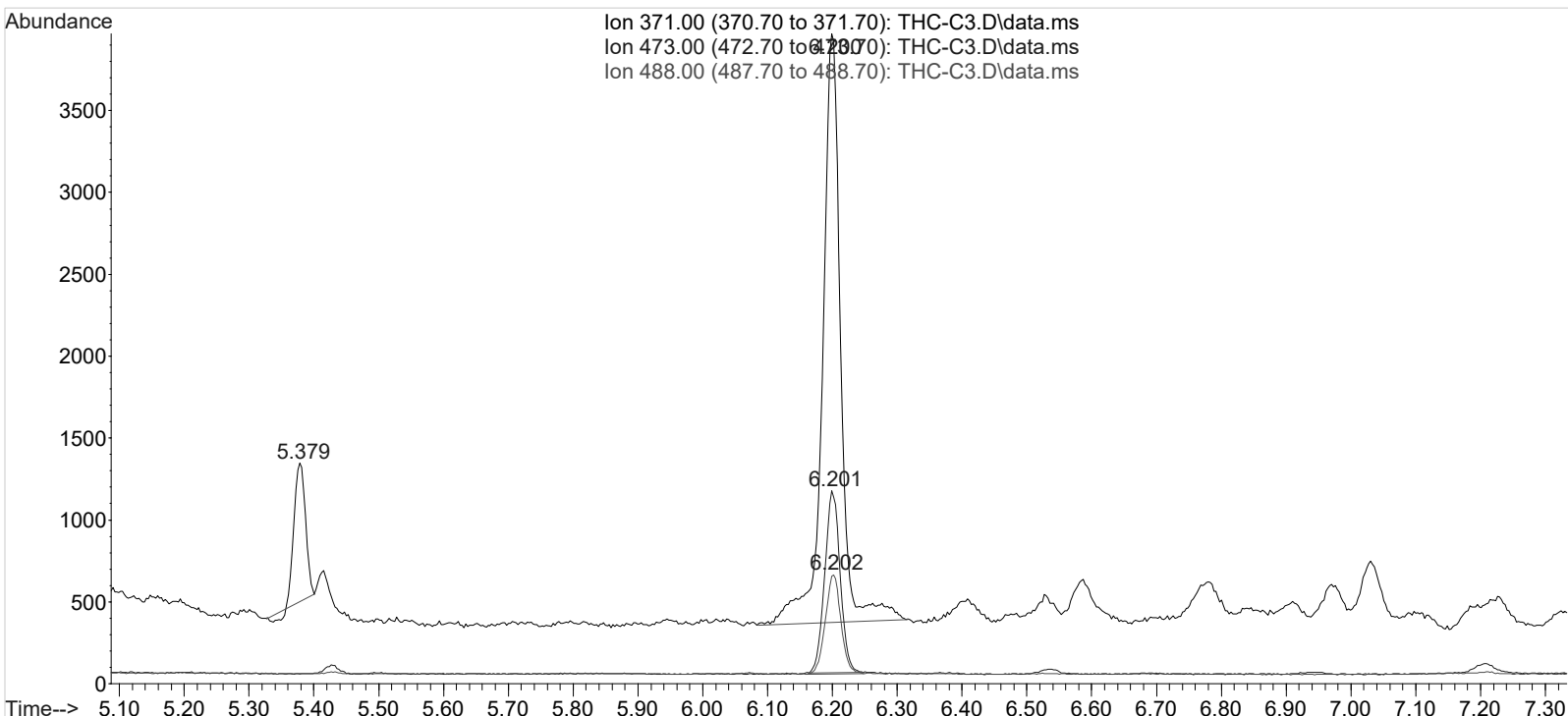
peak #	R.T. min	first scan	max scan	last scan	PK TY	peak height	corr. area	corr. % max.	% of total
1	6.201	375	388	404	BB	1100	18596	100.00%	100.000%

Sum of corrected areas: 18596
Signal : EIC Ion 488.00 (487.70 to 488.70): THC-C3.D\data.ms

peak #	R.T. min	first scan	max scan	last scan	PK TY	peak height	corr. area	corr. % max.	% of total
1	6.202	374	388	404	BB	604	10281	100.00%	100.000%

Sum of corrected areas: 10281

TOX.M Mon Jul 29 07:42:17 2019



g

AM 3 carboxy-THC Calculations Sheet

Run Date: 7/26/2019

Worklist #: 3577

Laboratory Case #: BioRad C3 Lot 68460

Case Calculations:

EIC Ion 371 Corr. Area: 70705

EIC Ion 473 Corr. Area: 18596

EIC Ion 488 Corr. Area: 10281

473:371 Ratio: 0.263

488:371 Ratio: 0.145

Quality Control Calculations:

1st Control

2nd Control

EIC Ion 371 Corr. Area: 215697

358860

EIC Ion 473 Corr. Area: 64357

107433

EIC Ion 488 Corr. Area: 34772

58432

Ratio of 473:371: 0.298

0.299

Average: 0.299

Ratio of 488:371: 0.161

0.163

Average: 0.162

Acceptable Retention Time Range: 6.105

to 6.303

Approximate Minimum Corrected Area of 371 Ion: 43139

Acceptable 473:371 Ratio Range: 0.239

to 0.359

Acceptable 488:371 Ratio Range: 0.130

to 0.194